

Bariatric Surgery as a Type 2 Diabetes Intervention Strategy on Prince Edward Island

Q: What is **type 2 diabetes (T2D)**?

A: A condition in which the body does not make enough insulin or cannot properly use the insulin it produces

Risk factors:



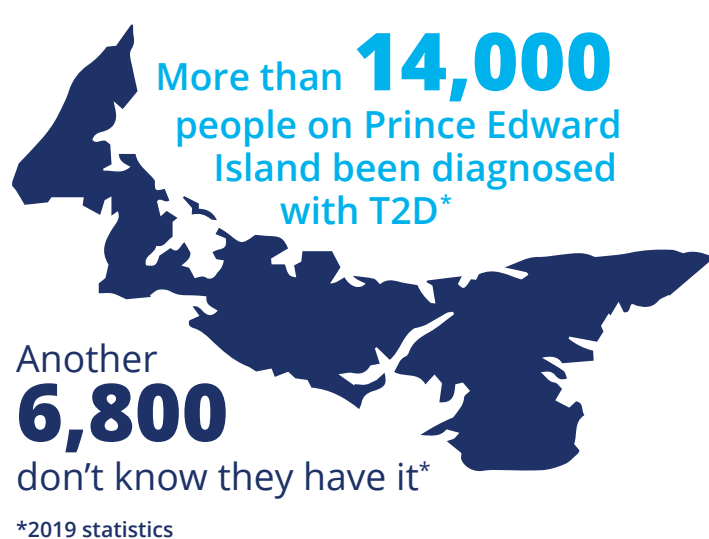
- 40 years of age or older
- Family history of diabetes
- Indigenous, Asian, South Asian, Hispanic, Arab or African descent



- Low socioeconomic status
- Lack of access to healthy food
- Neighbourhoods not designed for physical activity



- Unhealthy diet
- Excessive consumption of sugary drinks
- Physical inactivity
- Smoking tobacco



Body Mass Index (BMI) is a ratio of weight-to-height that can be classified into ranges associated with health risk



What is bariatric surgery?

An operation that makes changes to the digestive system that induce weight loss

Q: How does bariatric surgery help?

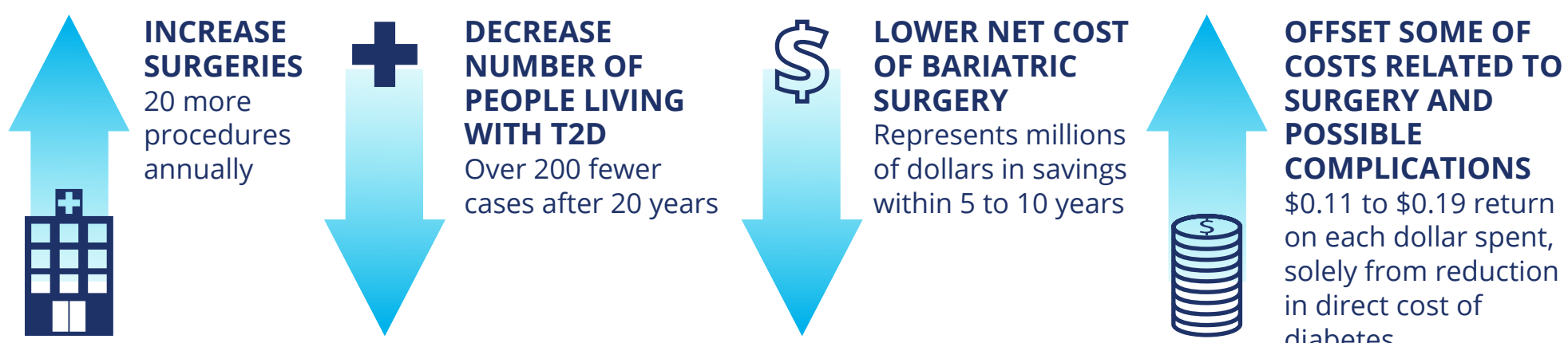
A: Bariatric surgery can result in sustained weight loss and improved control or remission of T2D

Q: When is it a treatment option for T2D?

A: Bariatric surgery may be considered in those with:
- an inability to achieve or maintain weight loss, despite repeated attempts with different therapies
AND
- a BMI of 35.0 and over

Bariatric surgery in Prince Edward Island is publicly funded for those who meet eligibility criteria.

Enhanced coverage for bariatric surgery and greater uptake among eligible people on Prince Edward Island would:*



*The data capture diabetes-related costs. Cost savings related to prevention or remission of other obesity-related conditions are not included in these estimates.

Recommendations to the Government of Prince Edward Island

- ✓ Provide funding for expansion of bariatric surgery program for eligible candidates to enhance uptake and ultimately reduce prevalence and burden of T2D in Prince Edward Island.
- ✓ Establish bariatric surgery awareness programs for health-care providers and eligible patients to better inform them about this therapy option.
- ✓ Support ALL evidence-based treatment options for people living with T2D.